

SCC Meeting Minutes
Hayden Peak Elementary
Friday, Jan 19, 2018
7:30 AM

Members in attendance: Tina Lyon, David Butler, Ann Robbins, Jason Wiersdorf, Andrea Marshall, Theresa Christensen

SNAP

- Routes were updated for improved safety and concise walking descriptions.
- 5600W is still not complete and kids are walking in the dirt. Need to check with City on completion date.
- See attached SNAP for details.
- Copy of SNAP will be made available at the Hayden Peak office.

Comcast April 2018

- Ideas for service day include: remove more flower beds for easy upkeep, weeding, pruning, planting trees, washing windows, desks and chairs.

Next Meeting

- Friday, March 23rd @ 7:30 a.m.: Complete Land Trust Plan for the 2017/18 School Year

Intradistrict Communication

DATE: January 19, 2018
TO: District School Traffic Safety Committee
FROM: David Butler
SCHOOL: Hayden Peak Elementary
SUBJECT: STUDENT NEIGHBORHOOD ACCESS PROGRAM PLAN

A copy of our school traffic routing plan for the 2018-19 school year is enclosed for your approval. For schools within the cities of Bluffdale, Herriman, Riverton and South Jordan, SNAP plans are due by **FRIDAY, JANUARY 19, 2018**. For schools within the City of West Jordan, SNAP plans can be signed on **THURSDAY, FEBRUARY 15, 2018, 1:00 p.m. at Columbia Elementary**. The plan includes:

- Student Neighborhood Access Maps with appropriate markings for safe access
- Text Descriptions of all access routes
- Loading/Unloading Access Zones for buses and private vehicles
- Possible concerns and suggested solutions for Safe School Access
- A signature page indicating approval of the proposed plan by the school Safety Committee and local Municipal and Law Enforcement agencies

Schools in Bluffdale, Herriman, Riverton, and South Jordan:

Email completed plans to: peggy.margetts@jordandistrict.org

Send originals to Peggy Margetts at Herriman Feeder System through district mail

District will acquire the necessary signature and return completed plans to school

Schools in West Jordan City:

Email completed plans to: peggy.margetts@jordandistrict.org

Bring originals to signing meeting at Columbia Elementary

When sending the electronic copy, make sure to rename it with your school's name and the year (i.e. Welby 2018-19 SNAP).

Clarifications of process are highlighted in yellow.

Attachment: Student Neighborhood Access Program (SNAP) Plan

INSTRUCTIONS FOR STUDENT NEIGHBORHOOD ACCESS PROGRAM (SNAP) PLANSchool Name: Hayden Peak Elementary

Check when completed:

- ☐ Identify a SNAP Team. Team should include your local School Safety Committee. Be sure to record minutes of all meetings and keep on file at your school. It will be helpful to download the SNAP Plan Planning Guide and the Mapping Software User Guide located at www.udot.utah.gov/SNAP.

Develop an effective Student Neighborhood Access Program (SNAP) Plan that parents can easily access and review. Plans will also be available on the Jordan District Web site. The Plan must include:

- ☐ **CREATE MAPS** including:
1. Suggested walking routes on the street system within school boundaries
 2. Loading/Unloading/Bus zones and private vehicles

Use the SNAP on-line software at www.snapforschools.com/ to create up-to-date maps (see Mapping Software User Guide for instructions). You may also use maps created by your local municipality. If you cannot remember the login information, contact Peggy Margetts (801) 567-8753 or Cherissa Wood (801) 965-4486 for assistance. Your map (or one created by your municipality) must include the following information:

- Safe walking routes to travel indicated with arrows
- School crosswalk zones
- Stop signs and lights, yield signs, and marked pedestrian crosswalks
- Crossing guards
- Railroad crossings
- Bridges or tunnels
- **School bus loading zones and private vehicles** (generally an additional map)

Additional information could be added to maps including:

- Sidewalks (or lack of sidewalks)
- Traffic volume
- Other hazards including canals, steep hills, etc.

☐ **WRITTEN TEXT DESCRIPTION**

Divide your school map into zones. Provide a written description of the best routes for students to walk or bike to school. This description should be available to parents along with your maps.

- ☐ **DISTRICT AND MUNICIPALITY CONCERNS** and school recommendations for improved safety. These will be reviewed with the Municipality and Community Representatives. Work orders will be generated by the District for concerns that are suggested for District improvement projects.

- ☐ **SIGNATURES** - Your SNAP plan should be reviewed and approved by:

- (Recommended) Local School Safety Committee Member
- (Recommended) PTA Representative
- (Required) Each page initialed and date approval by Principal and signature on page provided. Amendments will also need to be initialed and dated by Principal and submitted to District.

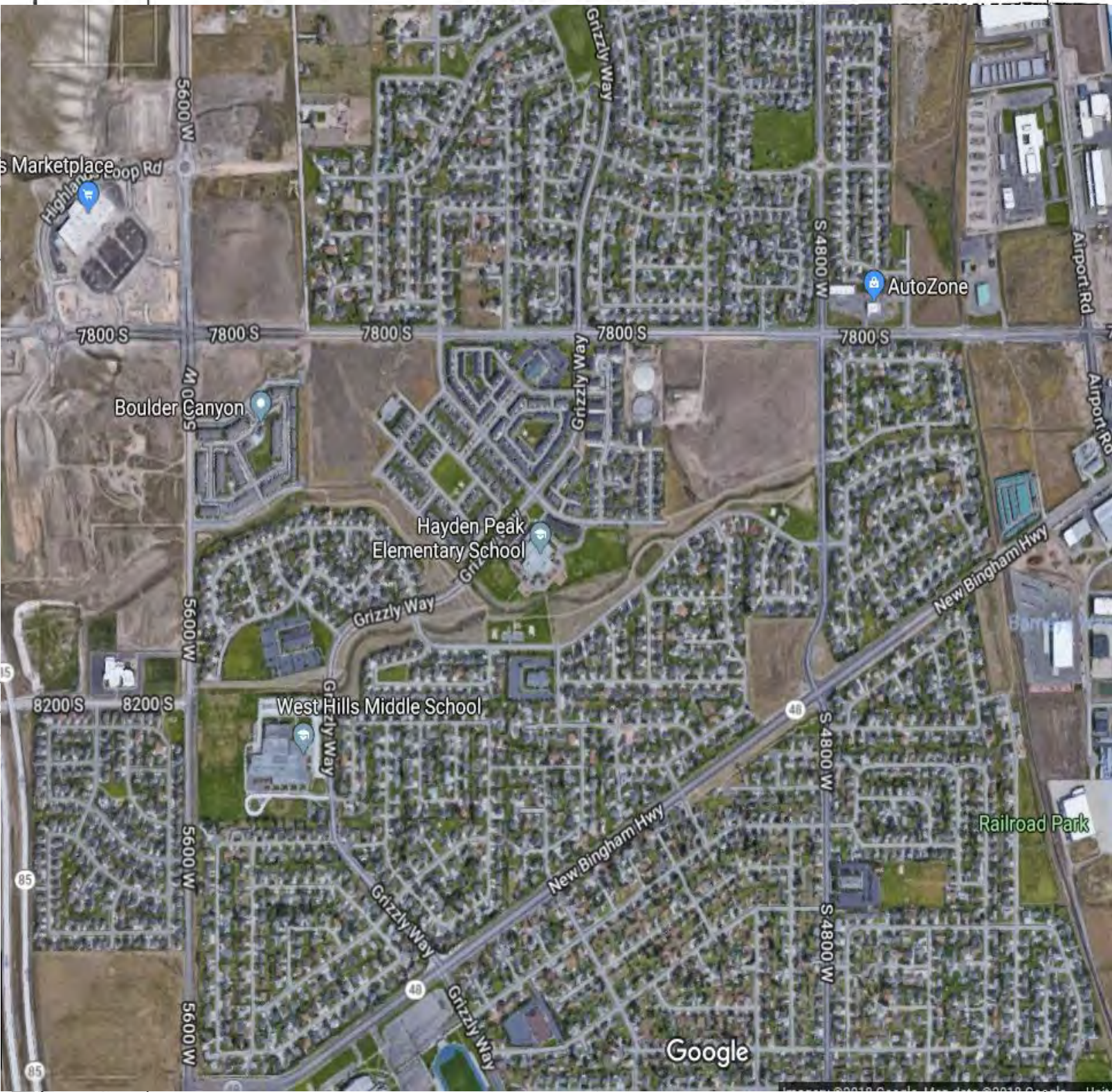
District will obtain the required signatures from:

- Municipality/County Representative
- State/Local Law Enforcement Representative
- State/Local Traffic Safety Engineer Representative
- Jordan School District Administrator of Schools

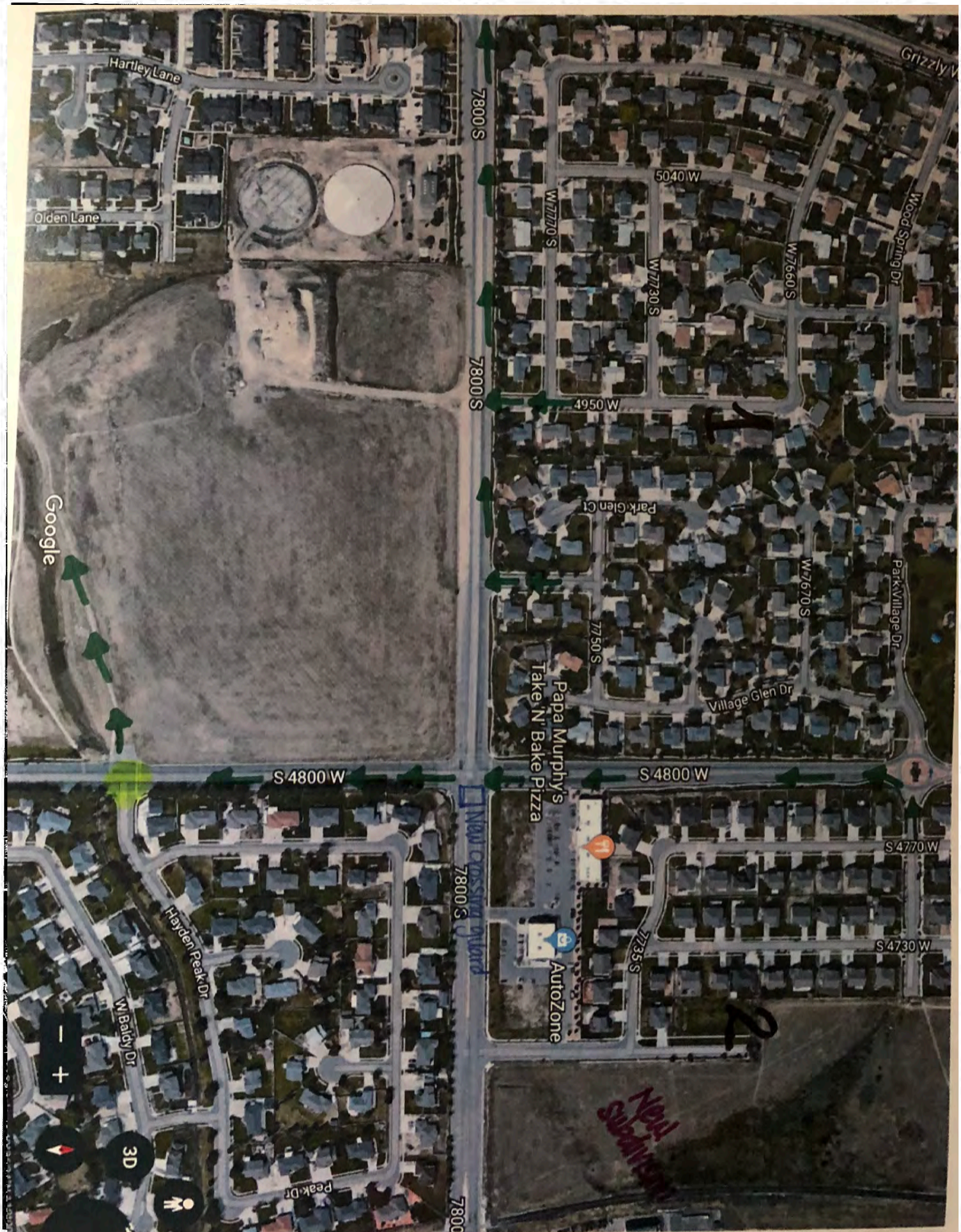
- ☐ PLEASE RETURN ORIGINAL WITH SIGNATURES THROUGH DISTRICT MAIL to Peggy Margetts at Herriman Feeder System. They will be returned to you when all approvals are obtained.

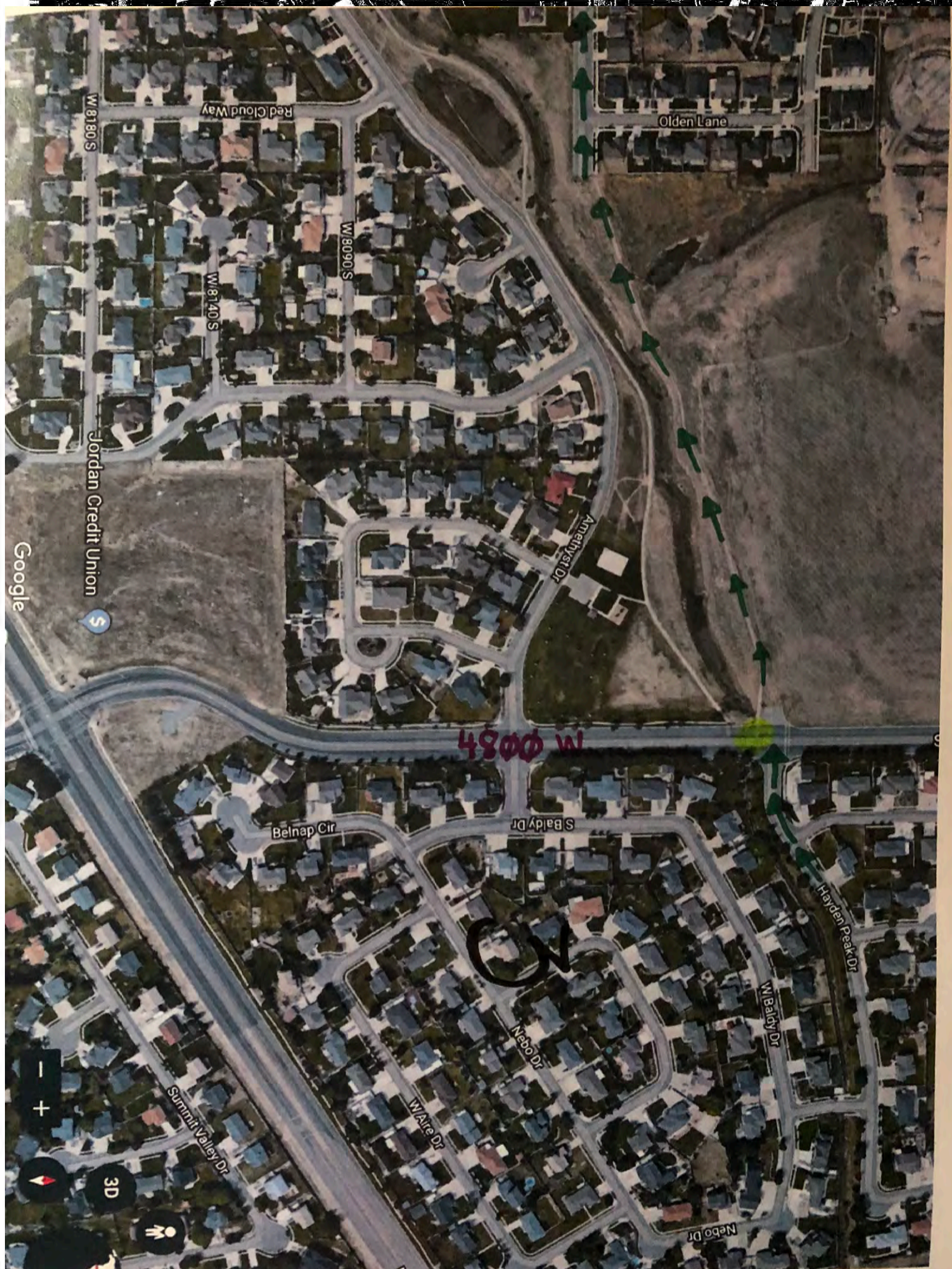
ALL ROUTE PLAN ALTERATIONS AND AMMENDMENTS TO DESCRIPTIONS MUST BE SUBMITTED TO RON BOSHARD FOR REVIEW AND REAPPROVAL SIGNATURES FROM THE REQUIRED REPRESENTATIVES.

Walking Route Map

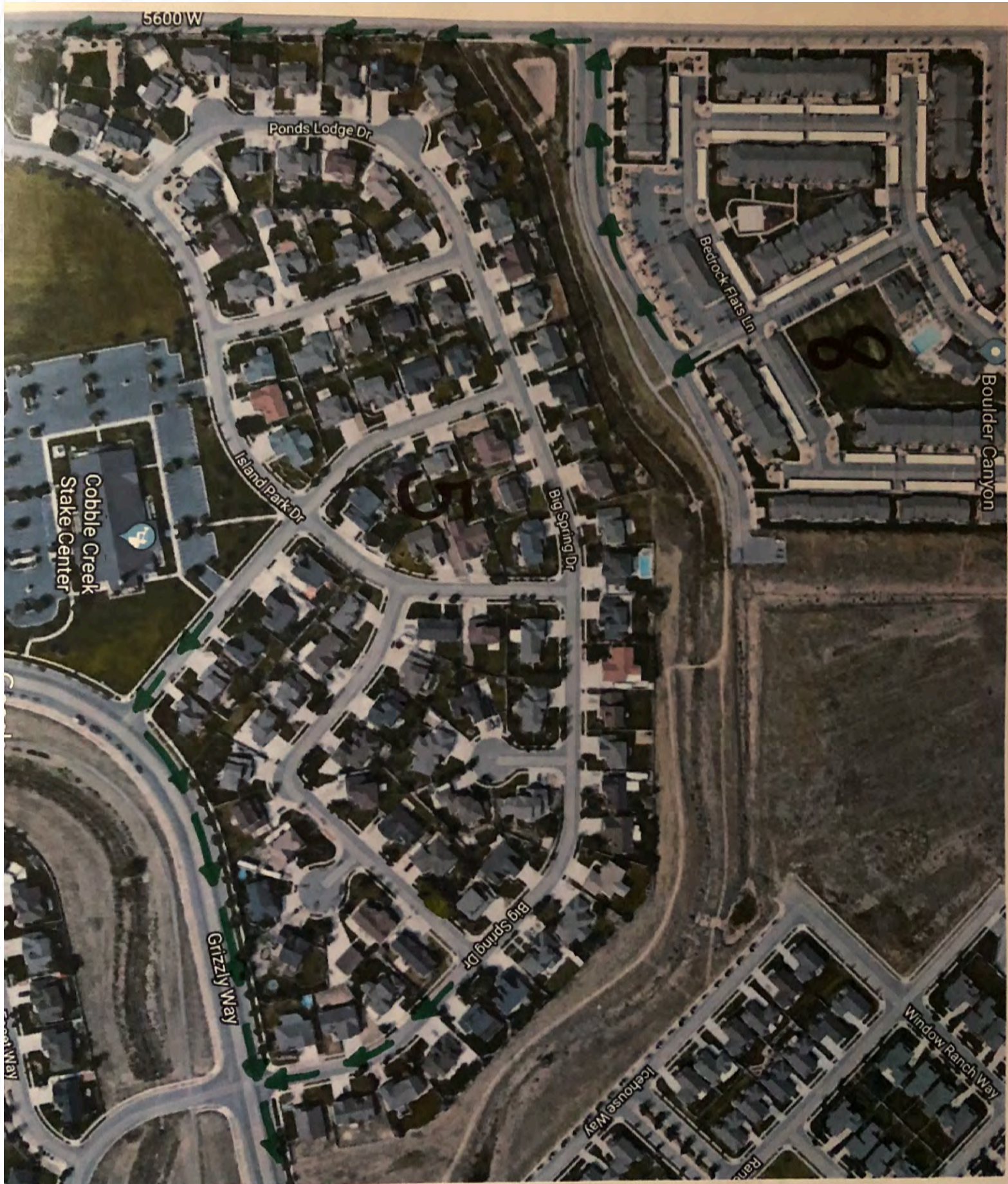


Approved:	Principal Initials/Date _____	Municipality/City Rep Initials/Date _____
	Municipality/City Rep Initials/Date _____	Municipality/City Rep Initials/Date _____
Amended:	Principal Initials/Date _____	Municipality/City Rep Initials/Date _____
	Municipality/City Rep Initials/Date _____	Municipality/City Rep Initials/Date _____









of Utah West Jordan

8200 S

8200 S

Bloomfield Farms

Sky Meadow Dr

Pinecastle Dr

Boulder Creek Rd S

Mitchell Lane Dr

Swain Creek Rd

Red Narrows Dr S

5600 W

West Hills Middle School

Grizzly Way

Wild Oak Dr

S 5520 W

Wild Oak Dr

W 8400 S

Silo Dr

W 8400 S

S 5390 W

W 5550 W

S 5310 W

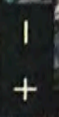
W 8230 S

S 5260 W

8180 S

Facel Way

Google



3D





7800 S

7800 S

7800 S

Google

W 8

3D

Text Description of Walking Routes

In this section you should divide your walking map into sections or zones and then provide a written description of the path students should take to walk to school. This description should accompany the visual map. **PLEASE HIGHLIGHT CHANGES FROM PREVIOUS SNAP PLAN.**

Route #1 (Students living north of 7800 S. and west of 4800 W.)

1. Walk south through subdivision to 7800 S.
2. Cross the intersection at 7800 S. and Grizzly Way with the crossing guard and proceed south to the crossing guard at Grizzly Way and Hayden Peak Drive onto the school property.

Route #2 (Students living east of 4800 West and north of 7800 South)

1. Exit subdivision at 7630 South
2. Walk south along 4800 W. and cross 7800 S. with new crossing guard.
3. Walk south along 4800 W. to W. Hayden Peak Dr.
4. Cross 4800 W. with crossing guard and proceed west on walking path and then enter the school property.

Route #3 (Students living south of 7800 S. and east of 4800 West)

1. Walk west through subdivision to 4800 West and West Hayden Peak Drive.
2. Cross 4800 West with the crossing guard and proceed west on walking path then enter the school property.

Route #4 (Students living south of Amethyst and east of Grizzly Way)

1. Walk north through subdivision until Amethyst.
2. Walk to 5140 W. and Amethyst (corner of LDS church)
3. Cross Amethyst with the crossing guard and proceed to school property.

Route #5 (Students living north of West Hills Middle School and west of Grizzly Way)

1. Walk east through subdivision to West Island Drive or Big Springs Drive and turn north onto Grizzly Way.
2. Walk north on the west side of Grizzly Way to the crossing guard across from the school at Swift Water Road.
3. Cross Grizzly Way with the crossing guard and proceed to the school property.
4. Students may also walk east on Big Spring Drive to Grizzly Way where they follow routes #2 and #3.

Route #6 (Students living south of West Hills Middle School, west of Grizzly Way, and east of 5600 West)

1. Walk east to Grizzly Way.
2. Walk on the west side of Grizzly Way.
3. Cross Grizzly Way with the crossing guard and proceed to the school property.

Route #7 (Students living west of 5600 West)

1. Walk east to 5600 West.
2. Cross 5600 West with the crossing guard at 8200 S.
3. Walk along the path at 5600 West to Amethyst.
4. Continue along Amethyst and cross Amethyst with crossing guard then proceed onto school property.

Route #8 (Students living in apartments east of 5600 West and north of 7800 South)

1. Exit the apartment complex on the south side and walk west to 5600 West.
2. Turn south and walk along the east side of 5600 West to the walking path on 8200 South.
3. Walk along the path at 5600 West to Amethyst.
4. Continue along Amethyst and cross Amethyst with crossing guard then proceed onto school property.

Route #9 (Students living west of Grizzly Way and south of 7800 South)

1. Exit subdivision via Clay Hollow or Window Rock Way to the west side of Grizzly Way.
2. Cross Grizzly Way with the crossing guard and enter school property.

Route #10 (Students living north of Hayden Peak Drive, east of Grizzly Way and south of 7800 South)

1. Walk south on Hartley or Olden Lane to Hayden Peak Drive.
2. Cross Grizzly Way with the crossing guard and enter school property.

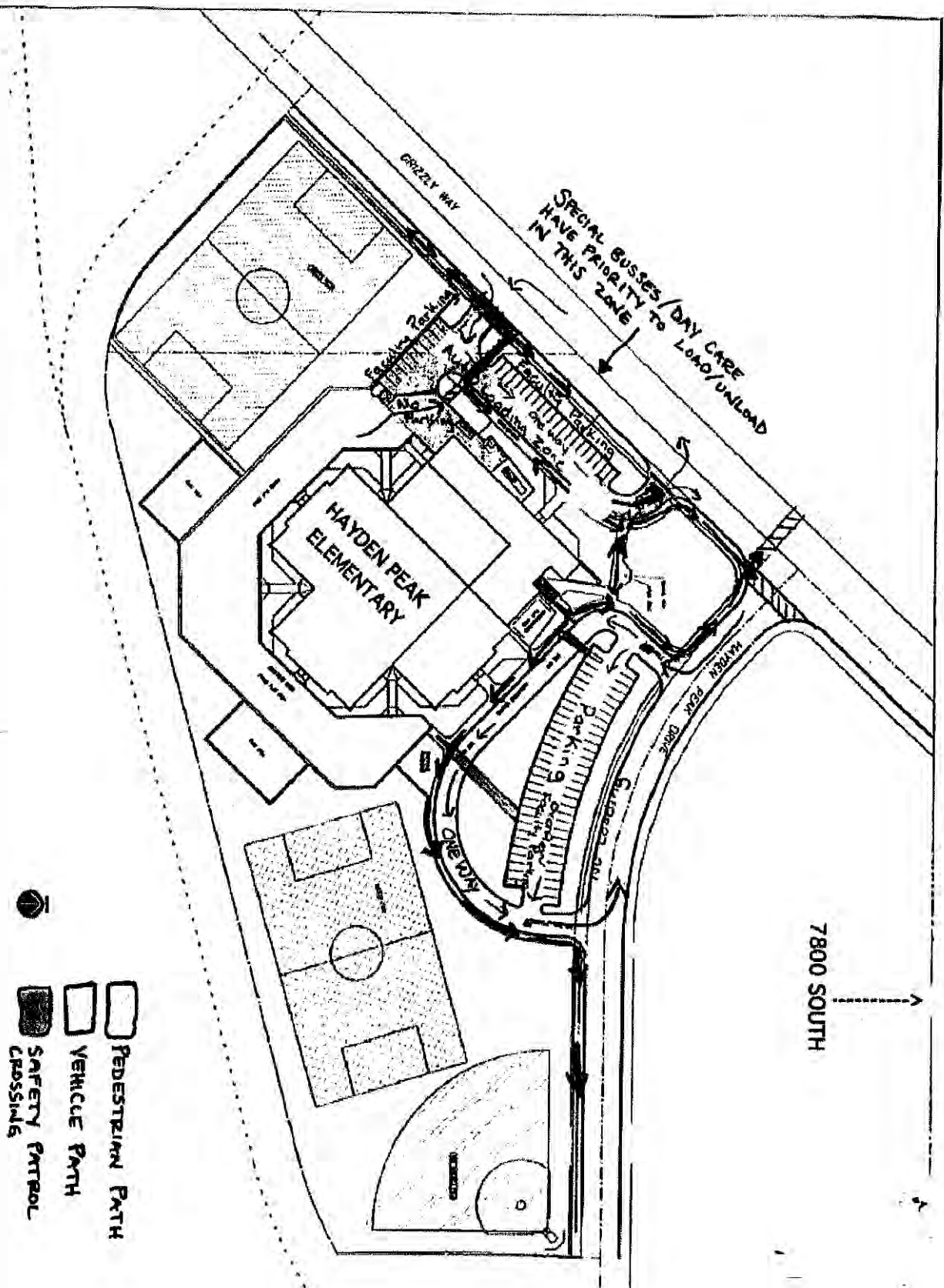
Hayden Peak has two drop off and pick up zones. One is located at the front of the building (north side) and the other is on the west side of the building. Both zones allow for continuous flow through a second lane.

The north zone has a striped loading area and is manned by safety patrol and supervised by teachers. An iron fence has been added to curtail jay-walking from the parking lot. Also, an additional cross walk has been added on the east end of the loading area. Stop signs have been installed and should slow the flow of traffic and provide a clearly marked area for loading and unloading. Parents may wait inside their cars for students with their engines off. This will prevent accidents and help with pollution from vehicular emissions. Once students are picked up, vehicles may then enter traffic using the second lane designed for continuous flow. This zone feeds onto Hayden Peak Drive. A cement barrier has been placed on the east side to prohibit cars from weaving in and out of the continuous flow lane and endangering pedestrians.

The west zone is demarcated with cones. Special busses and day care vans use this loading zone. Teachers supervise this loading area. This area feeds off and onto Grizzly Way.

Approved: Principal Initials/Date _____	Municipality/City Rep Initials/Date _____
Municipality/City Rep Initials/Date _____	Municipality/City Rep Initials/Date _____
Amended: Principal Initials/Date _____	Municipality/City Rep Initials/Date _____
Municipality/City Rep Initials/Date _____	Municipality/City Rep Initials/Date _____

Loading/Unloading Access Zones Map



JORDAN SCHOOL DISTRICT
Jordan School District
STUDENT NEIGHBORHOOD ACCESS PROGRAM
DISTRICT AND MUNICIPALITY CONCERNS FOR 2018-19

The columns of this form will expand as you type. Use the TAB key to move to the next column.

Issues/Concerns Requiring Attention/Consideration from Jordan School District	Issues/Concerns Requiring Attention/Consideration from the School's City and/or Municipality
<p>Restripe the parking lot on both the patron and faculty parking lots.</p>	<p>Move the 20 mph sign further south so that the speed changes before the school boundaries.</p> <p>Pave the dirt path behind West Hills Middle School.</p> <p>Fix the broken utility box next to the south entrance of the school.</p> <p>Crossing guard at 7800 South and 4800 West: this would allow for 20 + kids to safely cross as well as prepare for new subdivision.</p> <p>Pave the path near tunnel under Grizzly Way</p>

Approved: Principal Initials/Date _____	Municipality/City Rep Initials/Date _____
Municipality/City Rep Initials/Date _____	Municipality/City Rep Initials/Date _____
Amended: Principal Initials/Date _____	Municipality/City Rep Initials/Date _____
Municipality/City Rep Initials/Date _____	Municipality/City Rep Initials/Date _____

School Name: Hayden Peak Elementary

1. School Community Council Representatives

(Date recommended)

(Date recommended)

(Date recommended)

(Date approved)

(Date approved)

Date amended _____ Initials _____

(Date approved)

Date amended _____ Initials _____

(Date approved)

Date amended	Initials
--------------	----------

Obtain all signatures and return this form with your Student Neighborhood Access Plan

**Jordan School District School
Traffic Safety Committee
for the 2018-19 school year**

School Name: Hayden Peak Elementary

Principal: David Butler

☐ The SNAP Plan has been reviewed for completeness and has all of the required signatures of the School Traffic Safety Committee.

DISTRICT COMMITTEE MEMBER:

(Signature) (Date)

Date amended _____	Initials _____
--------------------	----------------

AREA ADMINISTRATOR:

(Signature) (Date)

Date amended _____	Initials _____
--------------------	----------------

☐ The SNAP plan was incomplete or missing required signatures of the School Traffic Safety Committee.

Please review and re-submit your SNAP plan with the following corrections: